

Module 4



**Develop an understanding of what
synchronous and student-centred learning
consists of in an online environment**



Table of Content



- About us
- Module Aims
- Introductions/
Icebreakers
- Class
agreement
- Learning
experiences and
styles
- Student centered
learning
- Self guided learning



Module Aims



- Be able to recall the advantages of synchronous learning
- Be able to discuss what skills are required for student centered learning
- Be able to identify skills required in creating student centered online modules

Session 1



- Welcome
- Student Centred Learning - Reflection
- Student Centred Learning – Defining
- Strategies for Student Centred Learning



Introductions



Ice breakers



Class Agreement

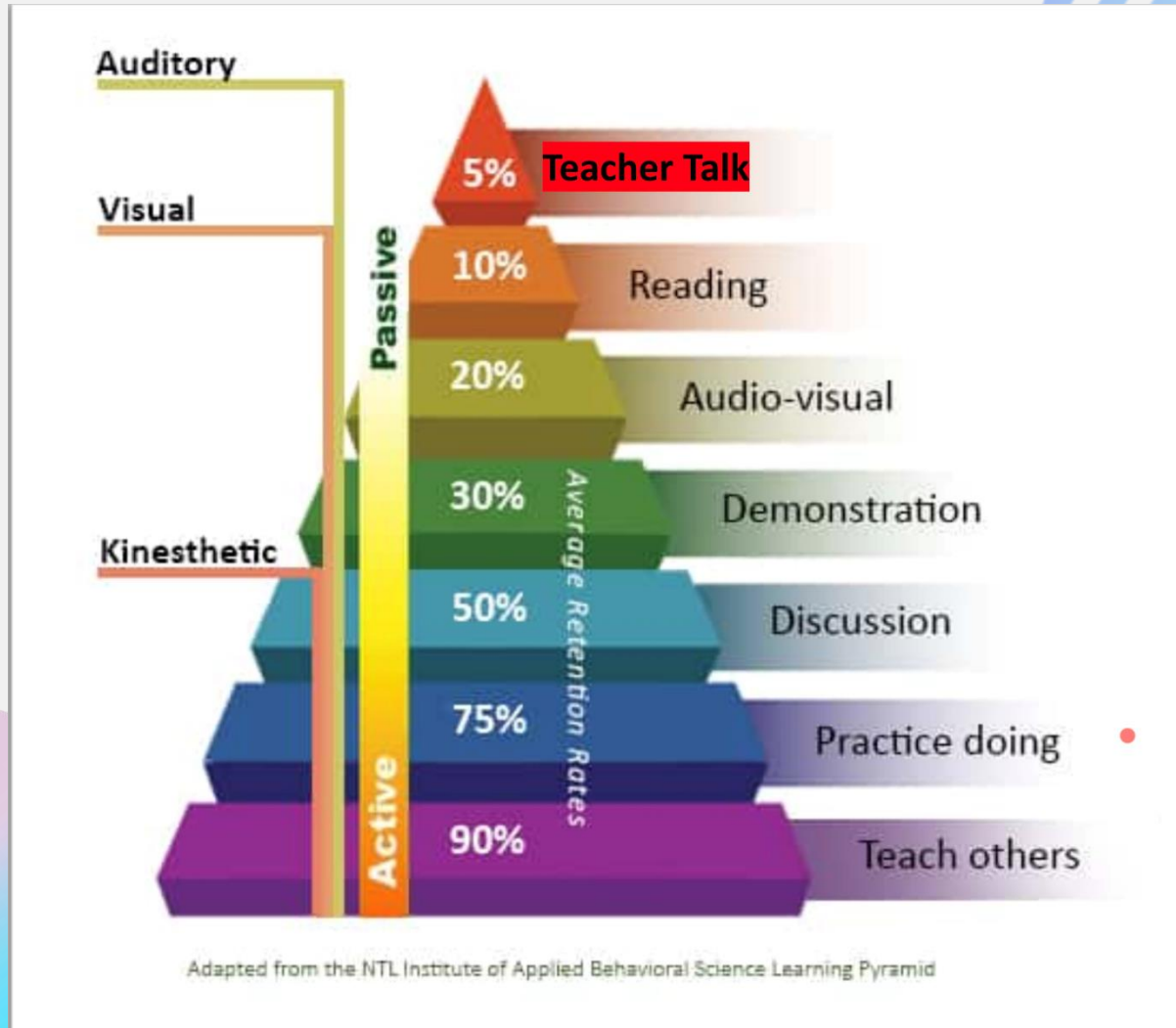


Good or Bad ?



Give an example of
good and bad
learning
experiences

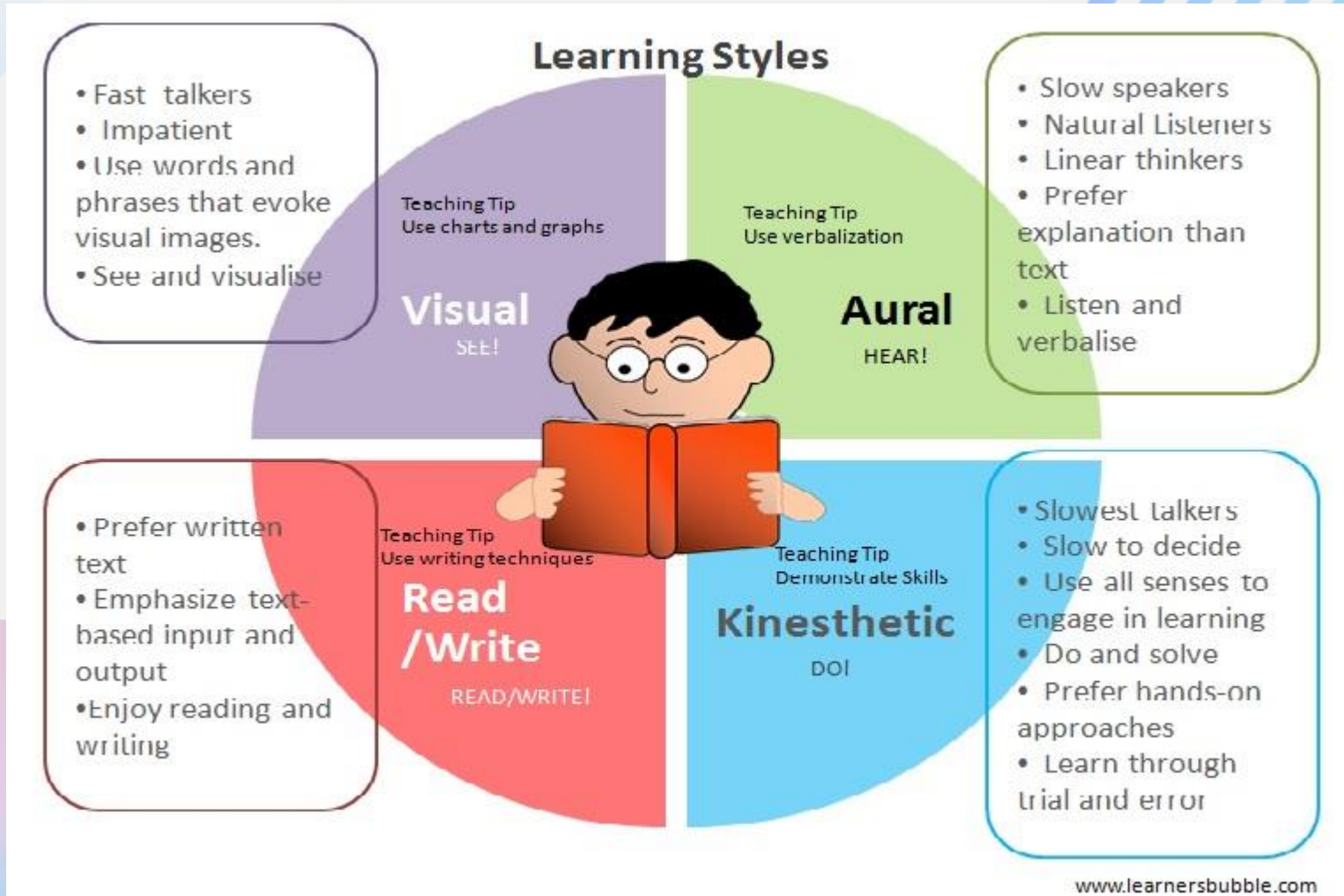




We all learn differently ,therefore tend to teach as we like to learn !.

VARK





We all learn differently ,therefore tend to teach as we like to learn !.

VARCK





BREAK



5 Minutes





What is synchronous Learning ?

SYNCHRONOUS

Zoom –

- Live
- Creates teacher Presences
- Social Environment
- Full functionality

ASYNCHRONOUS

Moodle + SNAGIT

- Offers full packages for live recordings
- Class Set up and Registration
- Social interaction



Student centered learning

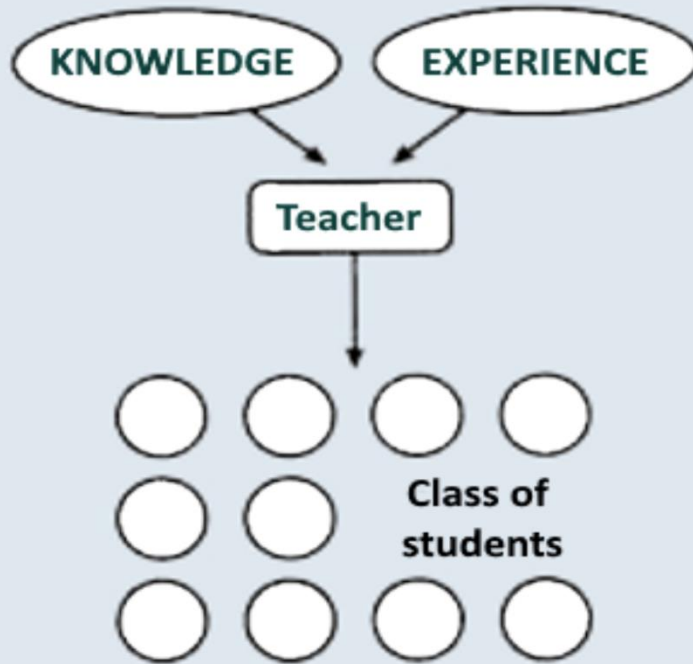
The Strategies

- Peer Learning
- Practice by doing
- Peer Assessment

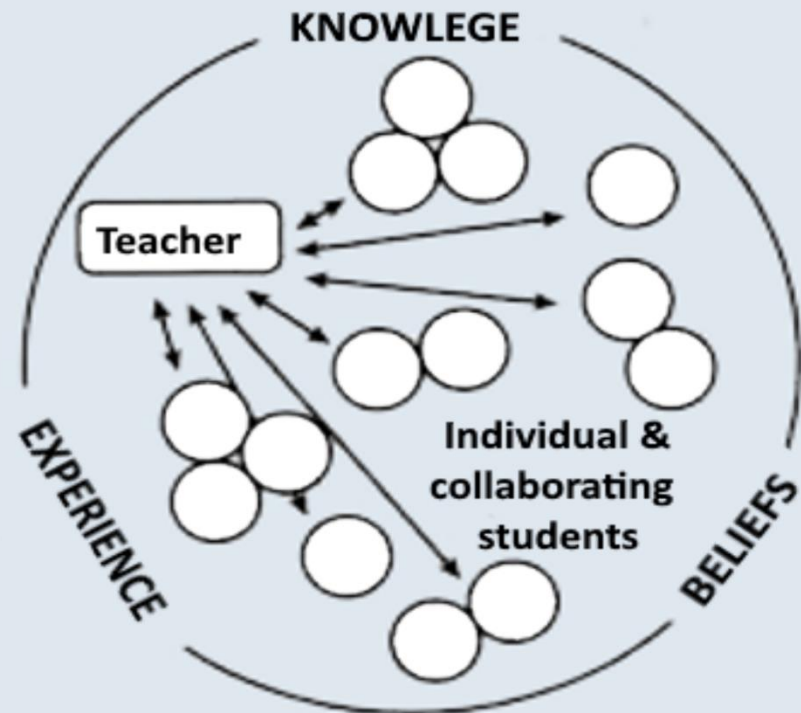
What are the benefits of each?

World Café Discussion.





**Teacher-centred
learning**



**Student-centred
learning**

Reflection

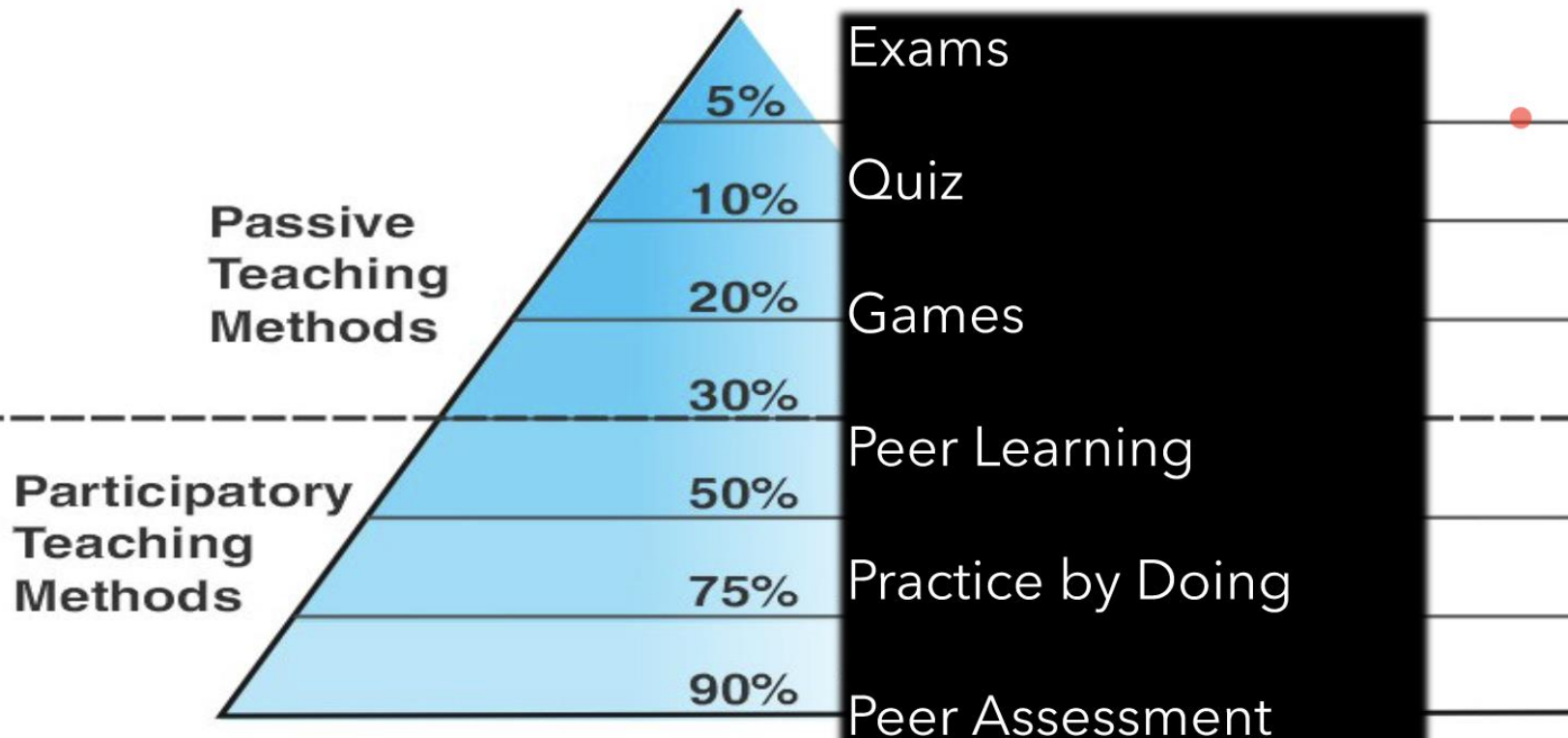
- Peer Learning
- Practice by doing
- Peer Assessment

Feedback



The Pyramid Learning

Average Retention Rates



Adapted from National Training and Development Journal



Summary

- *Recap*
- *Self Guided Study*
- *Next Steps*
- *Questions*



Self Guided Study

- Using the strategies learned today create a short lesson on how you would use them .



Thank You



Session 2



- Welcome
- Learning Environment
- Engaging Teaching, Learning and Assessment Strategies

Table of Content



- Introductions/
Icebreakers
- Feedback

-
- Student centered
learning
- Self guided learning



Introductions



Ice breakers



Feedback of Self Guided Study



The Strategies

- Learning Environment
- Increase Engagement
- Student Centered Assessments

Examples of each?



Learning Environment



Physical

Social

Learning



Increase Engagement

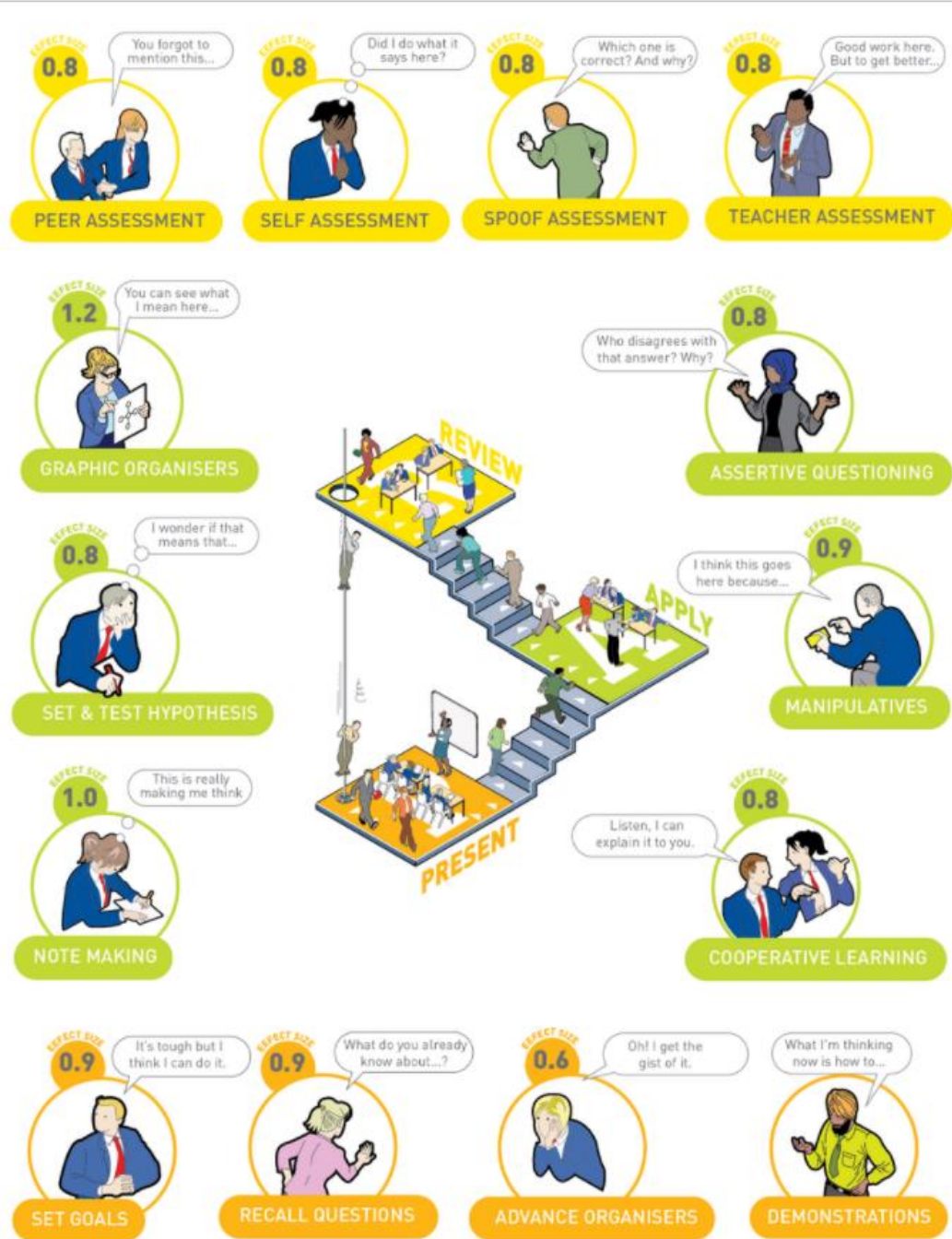


Geoff Petty PAR Model

Present

Apply

Review



Assessment



As well as feedback

Feed forward

E ASSESSMENT

To Include –

- Google Forms
- Menti.com
- Survey Monkey
- As well as Zoom and Moodle
- Awarding Organisation Requirements





BREAK



5 Minutes



Groups?



- 3 Groups, think of activities that could be used online based on the strategies discussed. Consider additional needs some students may have.



Present back to Group ?



Summary

- Recap
- Self Guided Study
- Next Steps
- Questions



Thank You



Contact Us



- ❖ KILCOOLEY WOMENS CENTRE / United Kingdom
- ❖ Fundacja Instytut Re-Integracji Społecznej / Poland
- ❖ VI One Consultancy / Netherlands
- ❖ Confederation of European Firms, Employment Initiatives and Cooperatives / Belgium
- ❖ DOMSPAIN SLU / Spain
- ❖ G.G. EUROSUCCESS CONSULTING LIMITED / Cyprus



[iDream Project | Facebook](#)